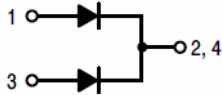
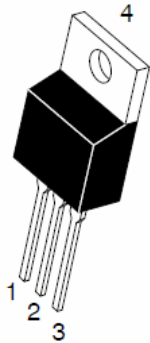


7 UHQFK 026 %DUULHU 6FKRWWN\ 5H

72 \$%
765 / &7

,72 \$%
765 / &7)



)HDXUHV

‡ \$GYDQWUHQFK WHFKQRORJ\
‡ /RZRUZDURGDWDJH GURS
‡ /RZRZURVVHV
‡ +LJKILFLHQF\ RSHUDWLRQ
‡ /HDGH)HLQLVK &RPSOLDQW

\$SSOLFDFWLRQV

‡ '& '& &RQYHUWHUV
‡ \$& '\$GDSWRUV
‡ 6ZLWFKRZHXSSOLHV
‡)UHHZKHHLRGLJ

0D[LPXP UDWLQJV DQG HOHFWULFDJ& FXODDWHVHUQRWHIGFV

3DUDPHWHU	6\PERO	/LPLW	8QLW
0D[LPXP SHSHVSHUNYHYURQHW DJH	9550		9
0D[LPXPYHUDRJDZDUG UFXJWHHJWQ GHYLFH SHGLRGH	,) \$9		\$
3HDN IRVZDURSUHQW VLKDDHQH ZDYH VXSHULPSRVVHGRFSDURVGHG	,)60		\$
2SHUDMXQDFDQRWRUDJH WHPSHUDW XUHURDJH WR			
7\SLFVCHUPDO USHVULVQHDQFH 72 \$% ,72 \$%	5\$-&		f & : f & :
		7<3	0\$;

,QVWDQWDQHRRORWRUDZDUG
SHGLRGH

9)

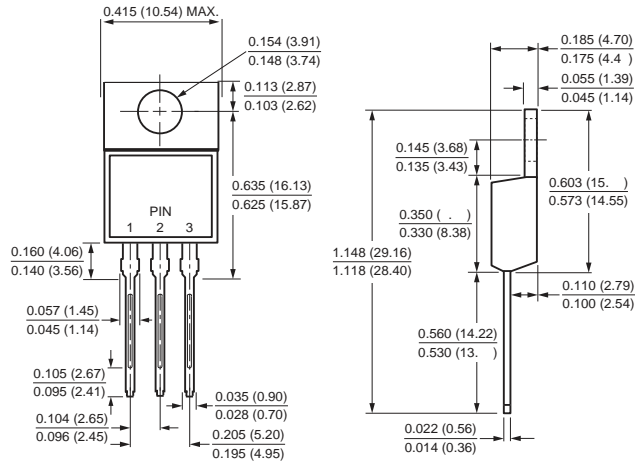
9

1RWHV

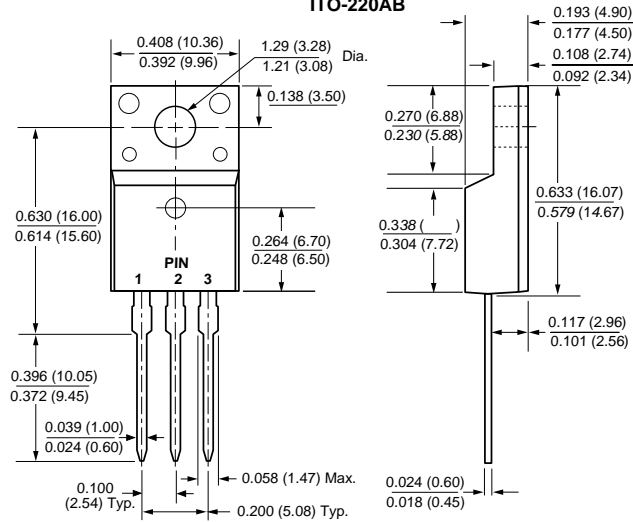
3XOVH WHVWSXOVH ZLGWK GXW\ F\FOH
3XOVH WHVW 3XOVH ZLGWK 0 PV

3 \$ & . \$ * (2 8 7 / , 1 (' , 0 (1 6 , 2 1 6

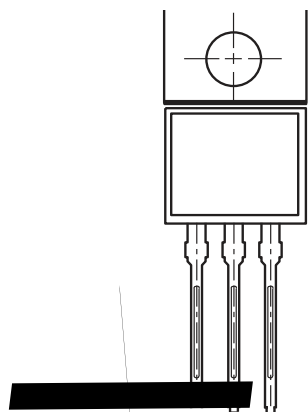
TO-220AB



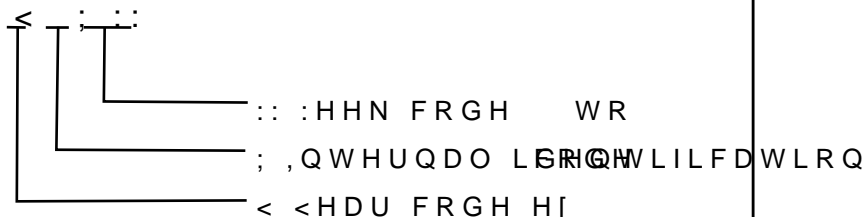
ITO-220AB



0DUNLQJ ,QIRUPDWLRQ

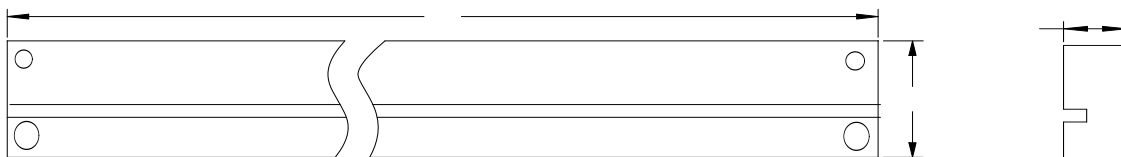


- ①
- ② 3URGXFW 765 / &7)
- ③ 3' & LQIRUPDWLRQ



3DFNDJLQJ ,QIRUPDWLRQ

7XEH 'LPHQVLRQV



,QVLGH %R[

2XWVLGH %R[

3DFNDJLQJ ,QIRUPDWLRQ

12	81,	7XEH 'LPHQVLR			,QVLGH			2XWVLGH %R[
6L]H	PP	\$	%	&	/	:	+	/	:	+
47<	3&6	3&6 7XEH			6PDO SHFWDJH3&6 WXEORWDO			3&6 FDUERGLWDO		
1RWH		7ROHUDQFH PP" PP			PP" PP			PP" PP		