

Test Report

No.: SZXEC23000164703

Date:

Test Report

No.: SZXEC23000164703

Date: Mar 03, 2023

Page 2 of 8

Test Result(s):Test Part Description

SN ID	Sample No.	SGS Sample ID	Description
SN1	A4	SZX23-0001647-0001.C004	"GPP WAFER"

Remarks:

- (1) 1 mg/kg = 1 ppm = 0.0001%
- (2) MDL = Method Detection Limit
- (3) ND = Not Detected (< MDL)
- (4) "-" = Not Regulated

EU RoHS Directive (EU) 2015/863 amending Annex II to Directive 2011/65/EU- Lead, Mercury, Cadmium, Hexavalent chromium, Polybrominated biphenyls (PBBs), Polybrominated diphenyl ethers (PBDEs), Dibutyl phthalate (DBP), Butyl benzyl phthalate (BBP), Bis(2-ethylhexyl) phthalate (DEHP),

Test Report

No.: SZXEC23000164703

Date: Mar 03, 2023

Page 3 of 8

Test Item(s)	Limit	Unit(s)	MDL	A4
Bis-(2-ethylhexyl) Phthalate(DEHP)	1000	mg/kg	50	ND
Diisobutyl Phthalate(DIBP)	1000	mg/kg	50	ND

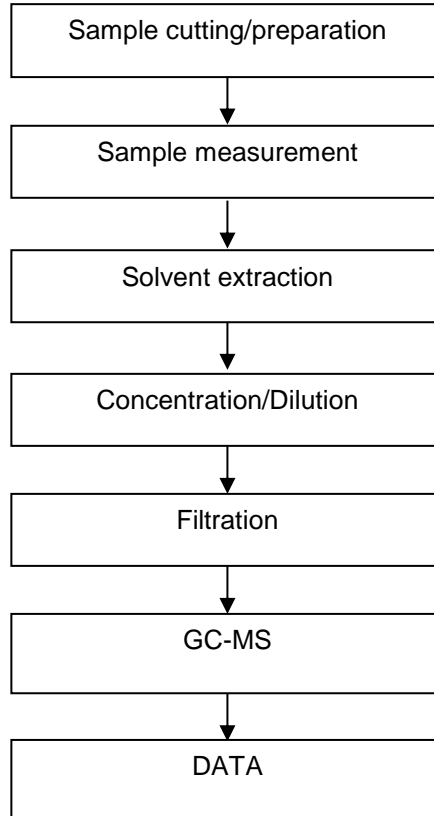
Notes:

- (1) The maximum permissible limit is quoted from RoHS Directive (EU) 2015/863.
- (2) IEC 62321 series is equivalent to EN 62321 series.
- (3) The restriction of DEHP, BBP, DBP and DIBP shall apply to medical devices, including in vitro medical devices, and monitoring and control instruments, including industrial monitoring and control instruments, from 22 July 2021.

Remark : According to the declaration from the client, Lead (Pb) in No.A4 is exempted by EU RoHS directive 2011/65/EU based on [ANNEX III 7(a)]: Lead in high melting temperature type solders (i.e. lead-based alloys containing 85 % by weight or more lead).

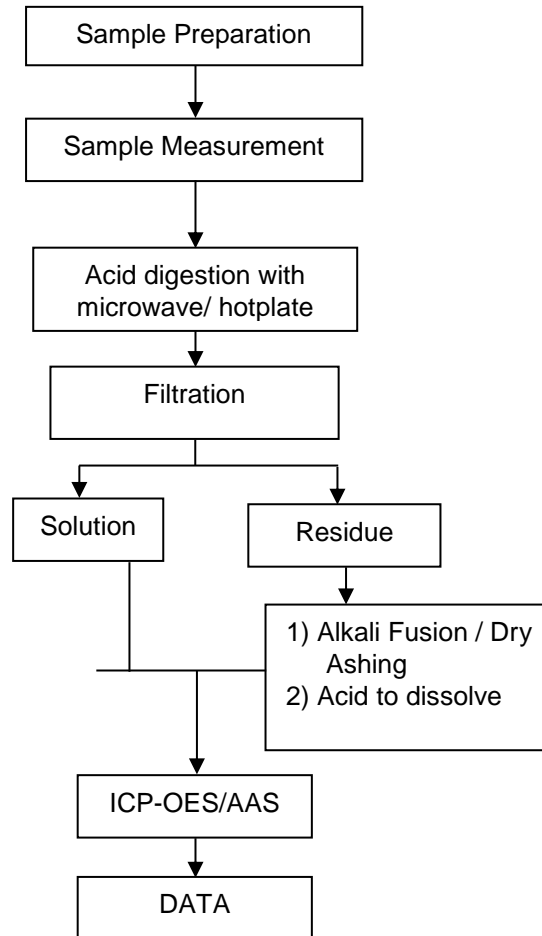
Unless otherwise stated, the decision rule for conformity reporting is based on Binary Statement for Simple Acceptance Rule (w=0) stated in ILAC-G8:09/2019.

Phthalates Testing Flow Chart



Elements (IEC62321) Testing Flow Chart

These samples were dissolved totally by pre-conditioning method according to below flow chart.



Test Report

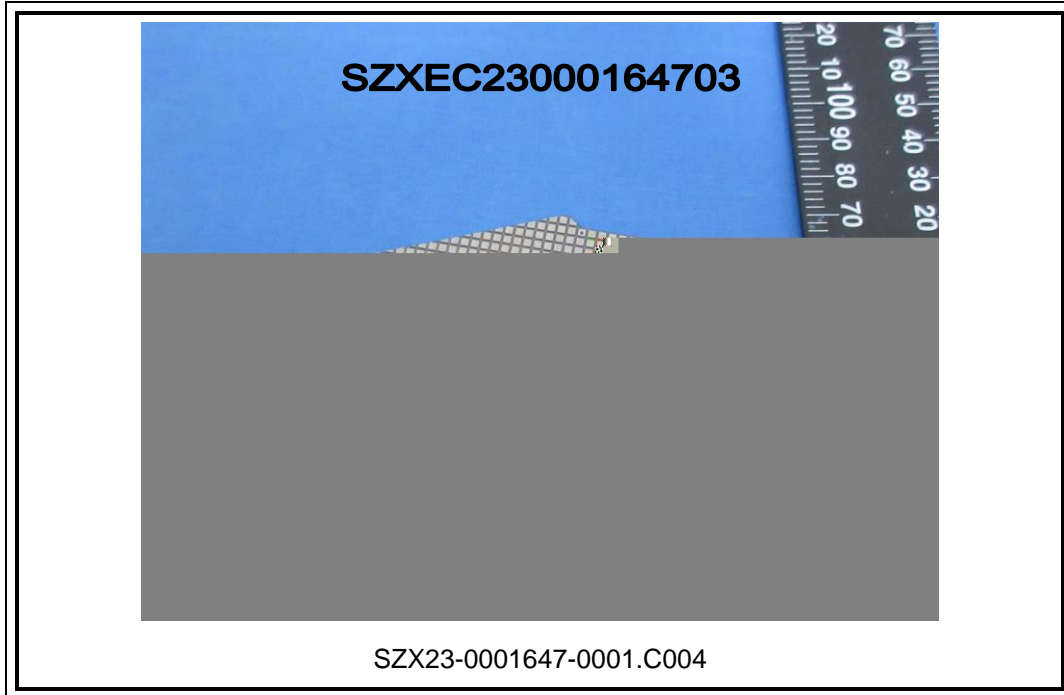
Test Report

No.: SZXEC23000164703

Date: Mar 03, 2023

Page 8 of 8

Sample Photo:



SGS authenticate the photo on original report only
*** End of Report ***